

Central Arizona Fire & Medical Authority 2016 Alarm Summary



2016 Statistics

Population.....	86,865
(Estimate from 2010 census blocks)	
Response Area	248 square miles
ISO Rating	4/10
Personnel Divisions:	
Administration:	
Chief Officers	4
Finance	4
Human Resources	2
Administrative Support	6
Fire Corp Volunteers	5
Operations:	
Battalion Chiefs	6
Captains	30
Engineers	30
Firefighters	40
Training	3
Planning & Logistics:	
Communications/Technical	4
Facilities Maintenance	1
Fire Prevention	5
Fleet Maintenance	5
Warehouse	1
Fire Facilities:	
Fire Stations	10
Reserve Fire Stations	2
Administration Building	1
Training Academy	1
Fleet Maintenance	1
Communications & Tech Services	1
Supply Warehouse	1
District Fleet:	
Engines (Total)	19
Paramedic Engines	10
Reserve Engines	4
Public Education Engine	1
Parade Engine	1
Training Engine	1
Wildland Engines	2
Ladders	1
Battalion Chief Units	2
HazMat Unit (joint with PFD)	1
Water Tenders	10
Patrols	8
Light Duty Vehicles	26
Utility Unit (53)	1
Support Unit (50)	1
Rescue Unit (58)	1

Incidents by Type

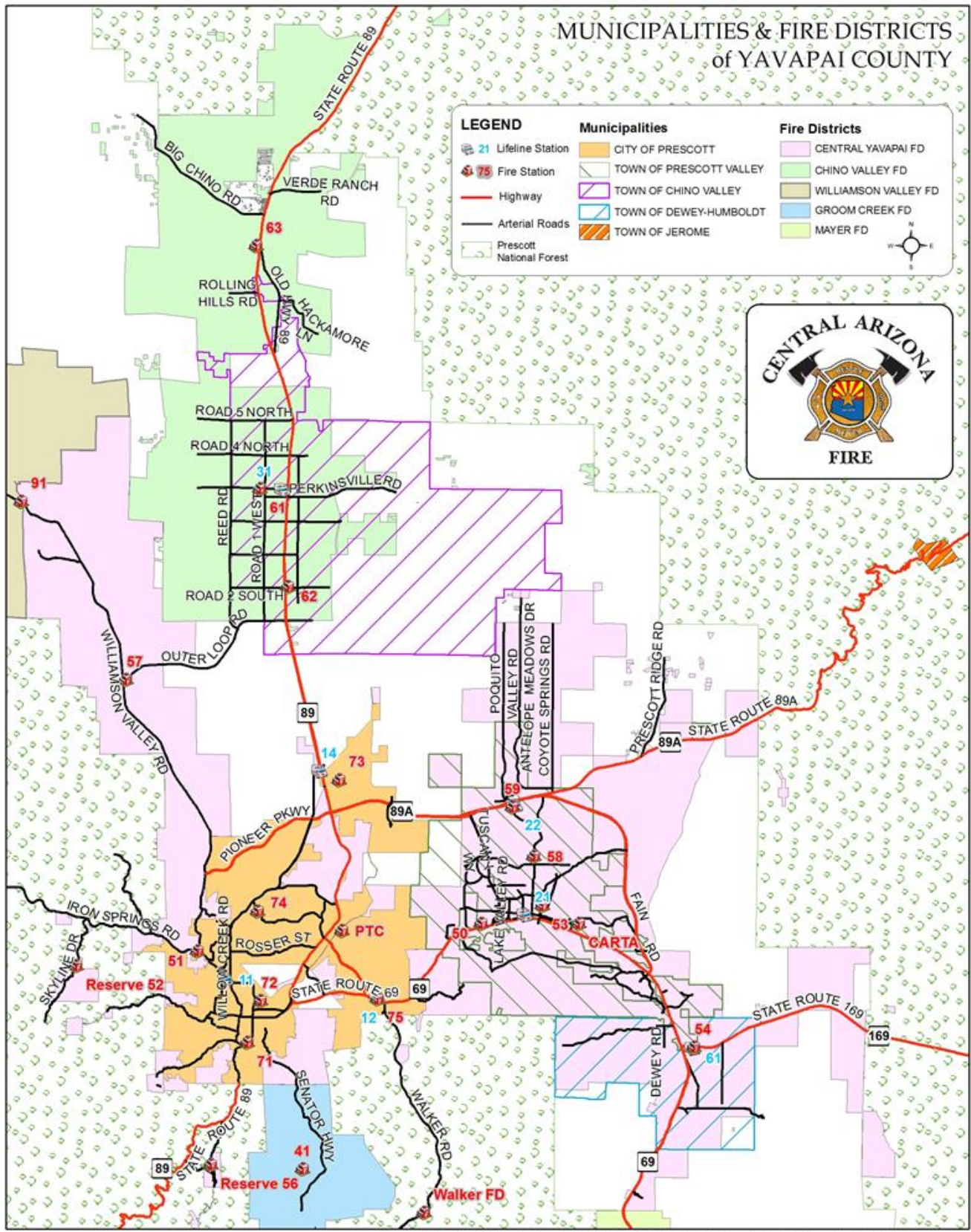
Structure Fires	13
Mobile; Portable Structure Fires	17
Structure; Confined Fires	27
Vehicle Fires	20
Wildland/Brush/Grass Fires	34
Trash; Other Fires	22
Explosion/Rupture No Fire	5
EMS/Rescue Calls	6,759
Vehicle Accident with Injury	284
Vehicle Accident with No Injury	193
EMS Assistance	27
Hazardous Conditions	153
Service Calls	1,652
Good Intent Calls	1,213
False Alarms	308
Severe Weather or Natural Disaster	9
Special Type of Incident	11
Total Fire Calls	133 = 0.36 /day
Total EMS Calls	7,263 = 19.84 /day
Total Other Calls	3,346 = 9.14 /day
Total Incidents	10,961 = 29.95 /day

Unit Responses

Unit	Responses	Average Shift	Response Reliability*
E50	1,509	4.12	71.76%
E51	1,815	4.96	88.68%
E53	1,928	5.27	77.09%
E54	1,328	3.63	87.50%
E57	470	1.28	89.64%
E58	1,688	4.61	82.62%
E59	1,306	3.57	87.78%
E61	1,012	2.77	83.45%
E62	1,235	3.37	82.60%
E63	477	1.3	93.88%
T50	51	0.14	N/A
B3	293	0.8	N/A
B6	135	0.37	N/A

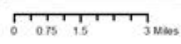
*Response Reliability is the probability that an apparatus is able to respond to an incident in its first due area based on the past year's incidents. N/A implies that the apparatus is not dedicated to a first due area, and responds as needed.

MUNICIPALITIES & FIRE DISTRICTS of YAVAPAI COUNTY



LEGEND

Municipalities		Fire Districts
21 Lifeline Station	CITY OF PRESCOTT	CENTRAL YAVAPAI FD
75 Fire Station	TOWN OF PRESCOTT VALLEY	CHINO VALLEY FD
Highway	TOWN OF CHINO VALLEY	WILLIAMSON VALLEY FD
Arterial Roads	TOWN OF DEWEY-HUMBOLDT	GROOM CREEK FD
Prescott National Forest	TOWN OF JEROME	MAYER FD



Created 1/2017, Disclaimer: Map information is believed to be accurate but accuracy is not guaranteed. No portion of the information should be considered to be, or used as, a legal document. Users recognize more extensive research is necessary when attempting to make geographic definitions of this area.